

FINGERING CHART FOR THE FLUTE WHEN USING THE GLISSANDO HEADJOINT

For every note on the flute from its low B to the fourth octave D, the maximum possible range of glissando for each pitch is given. Notation for downwards glissandi and upwards glissandi are presented. When the Glissando Headjoint® is all the way in, towards the body of the flute—“home base”—the flute is in tune as a normal flute and every fingering produces its expected pitches.

Fundamentally, a downwards glissando begins with the Glissando Headjoint® all the way in towards the body of the flute and the flutist playing the note that starts the glissando. The flutist then extends the Glissando Headjoint® until the desired end pitch is reached.

An upwards glissando begins with fingering of the note that the glissando will reach and with the Glissando Headjoint® extended as far as necessary to play the beginning note of the glissando.

Intonation Symbols:

♯ = Quarter sharp

♭ = Quarter flat

↑ = Slightly sharp

↓ = Slightly flat

/ or \ = glissando

Notation for upwards glissando arriving at a regular fingering:

Fingered pitch with Glissando Headjoint® extended to notated pitch



Finger C₄ with Glissando Headjoint® extended to A₄



Play A₄ and slide headjoint inwards to "home base"

The Glissando Headjoint® is then moved to “home” position (all the way in towards the body of flute). The glissando is complete when it reaches the arrival note.

Notation for a downwards glissando using a special fingering:

“In”: Glissando Headjoint®
in home position



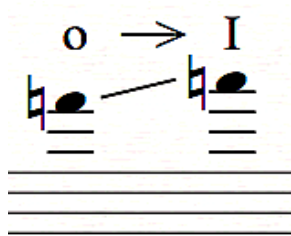
“Out”: Glissando Headjoint®
extended to produce notated pitch

Fingering:



Notation for an upwards glissando using a special fingering:

“Out:” Glissando
Headjoint® extended to
produce notated pitch



“In”: Glissando Headjoint®
in home position

Fingering:



Notation for a downwards glissando using a harmonic fingering:

◊ = fingering of harmonic

Glissando Headjoint® in
“home” position



Glissando Headjoint® pulled out
to notated pitch

Notation for an upwards glissando using a harmonic fingering:

Glissando Headjoint®
pulled out to notated pitch



Glissando Headjoint® pushed in
to “home” position

Fingering Chart Page 2

Robert Dick

Flute

Can be bent to G \sharp , *p* only

Can be bent to A \flat , *p* only

Detailed description: A single musical staff in treble clef. It contains four measures of music. The first measure has notes G4, A4, B4, C5 with fingerings 1, 2, 3, 4. The second measure has notes B4, A4, G4, F4 with fingerings 3, 2, 1, 4. The third measure has notes G4, F4, E4, D4 with fingerings 3, 2, 1, 4. The fourth measure has notes D4, C4, B3, A3 with fingerings 4, 3, 2, 1. Annotations above the staff indicate that the G4 note can be bent to G#4 (piano only) and the A3 note can be bent to Ab3 (piano only).

I → o o → I I → o o → I

E \sharp must be lipped up

I → o o → I

Detailed description: A musical staff in treble clef with six measures. The first four measures have notes G4, A4, B4, C5 with fingerings 1, 2, 3, 4. The fifth measure has notes B4, A4, G4, F4 with fingerings 3, 2, 1, 4. The sixth measure has notes G4, F4, E4, D4 with fingerings 3, 2, 1, 4. Above the staff, articulation markings 'I → o o → I' are placed above the first, second, third, and sixth measures. Below the staff, fingering diagrams are shown for each note, consisting of circles representing fingers (1-4) and a vertical line for the thumb. The diagrams for the first four measures are identical. The diagram for the fifth measure shows the thumb lipped up. The diagram for the sixth measure is identical to the first four. An annotation 'E# must be lipped up' is placed above the fifth measure.

Can be lipped to F \sharp

Detailed description: A musical staff in treble clef with four measures. The first measure has notes G4, A4, B4, C5 with fingerings 1, 2, 3, 4. The second measure has notes B4, A4, G4, F4 with fingerings 3, 2, 1, 4. The third measure has notes G4, F4, E4, D4 with fingerings 3, 2, 1, 4. The fourth measure has notes D4, C4, B3, A3 with fingerings 4, 3, 2, 1. An annotation 'Can be lipped to F#4' is placed above the fourth measure.

Fingering Chart Page 3

Robert Dick

Can be
lipped to G \flat

Flute

Regular fingering

I → o o → I

Regular fingering

I → o o → I

I → o o → I

I → o o → I

I → o o → I

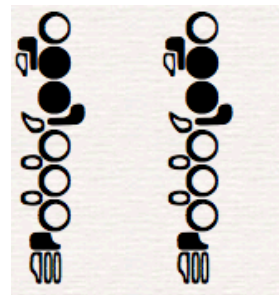
I → o o → I

Thumb Thumb

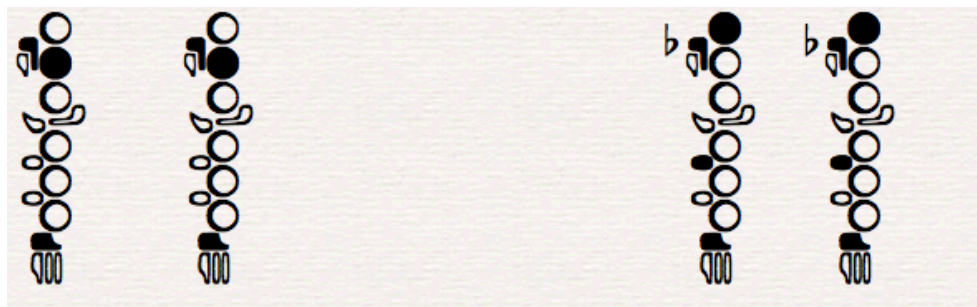
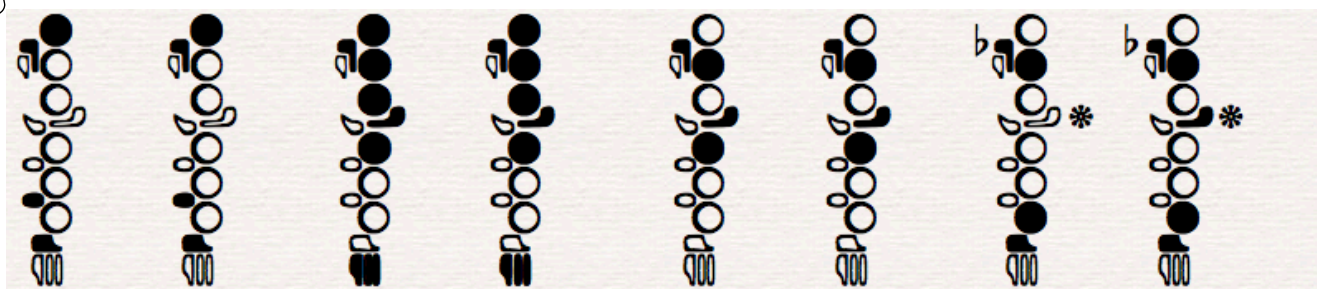
Fingering Chart Page 4

Robert Dick

Flute



Clearer tone

*Add G# after starting slide *Lift G# just before ending slide